



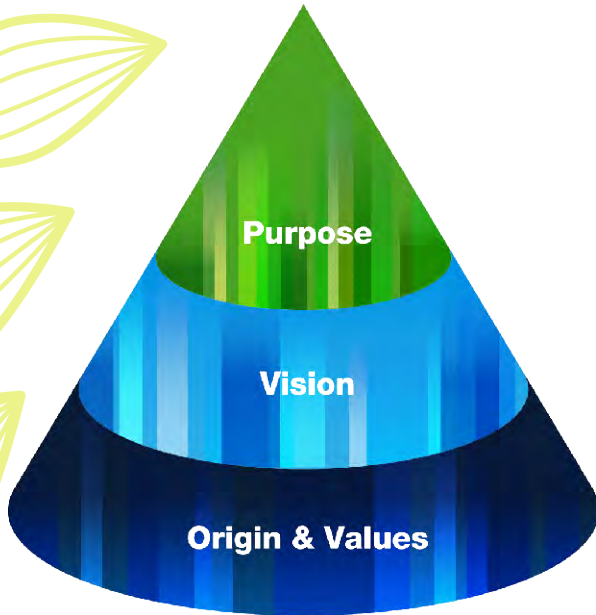
Precision in Purity

*Where Innovation Meets
Cleanroom Excellence.*



www.icleantech.com





PURPOSE

With our revolutionary environmental innovations, we activate the Earth's future.

Takasago Thermal Engineering synchronizes the air to various spatial environmental, creating endless possibilities. Moreover, each employee is part of a tradition of pride and expertise built over the Company's 100-year history, and we continue to expand the spirit of diversity and co-creation through harmonious relationships with others. We consistently pioneer paradigm-shifting environmental innovations. We are able to create optimized spatial environments not only on this planet, but also in space. And we are profoundly dedicated to the wellbeing of our families, our fellow human beings, and all life on Earth.

Vision

Be an Environment-Creator.™

Origin

Contribute to society through social harmony and creative solutions.

Values

- TakasagoWay
- Provide value beyond expectations
- Act with fairness, confidence and pride.
- Build trust to create enduring relationships.



Company Policy

contribution to society through personal harmony and creativity

PURPOSE

Iclean has always been passionate about cleanrooms driving towards sustainable environment through Innovative technologies

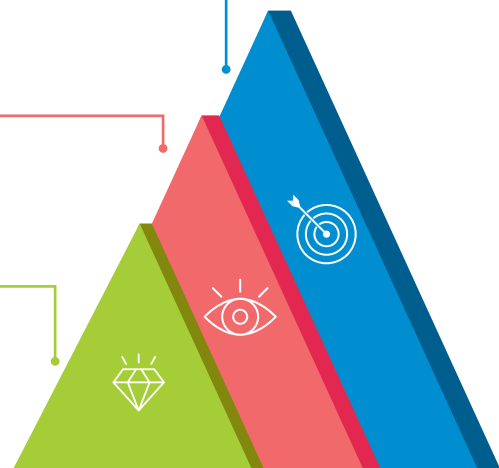
Vision

To be an integrated player in Cleanroom Solutions offering world class products and services so as to be among the leading global suppliers of Turnkey Cleanroom Solutions.

Values

iClean - Takasago Way, Act with fairness, confidence and pride.

iClean - Incubation, **C**ompliance, **L**earning, **E**xecution,
"All for one - one for All", **N**ever giveup



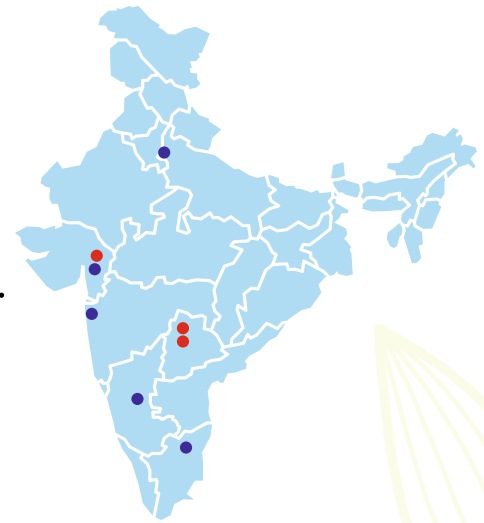
COMPANY OUTLINE

INFO

Name : **Integrated Cleanroom Technologies (P) Ltd.**

Establishment : 25th November, 2002

Mother Company : **Takasago Thermal Engineering Co., Ltd.**



● **HEAD OFFICE**
● **MANUFACTURING FACILITIES**
● **SALES OFFICES**

HEAD OFFICE

3rd Floor, Ratna Arcade, Survey No: 126-128, Near Axis Bank, Kompally, Hyderabad 500 014, Telangana, INDIA
Ph: 040-2716 5311, | Mob: +91 8897845554
www.icleantech.com

Manufacturing Facilities

Main Plant: Survey Nos. 179 to 182, Yellampet, Medchal Mandal, Malkajgiri, Telangana, 501401
Phone: +91 40 2379 2024

GRP Plant: Sy No. 515, Nutankal (v), Medchal Mandal & District, Telangana. 501401.

Baroda Plant: Survey No. 395, CHP Estate, Ranoli Station Road, Padamla District, Vadodara - 391 350
Phone: +91 85111 75972

SALES OFFICES

- ▶ **CHENNAI**
- ▶ **MUMBAI**
- ▶ **VADODARA**
- ▶ **BANGALORE**
- ▶ **DELHI**

SUBSIDIARIES

iClean Hollow Metal Systems (P) Ltd	Manufacturers All types of fire rated doors
ICTL Precoat Panels (P) Ltd.	Manufacturers Pre-coated Panels
Ipharm Process Technologies (P) Ltd.	Process Equipments - Catering Pharma Industry
Nitta Filters India (P) Ltd.	Manufacturers All types of filters

Company Overview

Established in 2003, Integrated Cleanroom Technologies Private Ltd. (iClean) has emerged as a leader in providing turnkey cleanroom solutions. With a proven track record in designing and installing advanced cleanrooms, we serve a diverse array of sectors including Pharmaceuticals, Healthcare, Semiconductor, Dryroom facilities manufacturing, Fastmoving consumer goods (FMCGs), and Governmental projects.

In 2023, iClean became a fully owned subsidiary of Takasago Thermal Engineering Co., Ltd., (TTE) further enhancing our capabilities and broadening our offerings. Today, we are not only experts in cleanroom facilities but also pioneers in innovative solutions for Battery Manufacturing, Biotechnology, Microelectronics, Research and Development Centers, Food and Beverages, Defense, Automotive, Aerospace and Healthcare sectors.

Expertise and Services

At iClean, we take pride in our team of over 300+ Skilled Engineers and 500+ dedicated professionals. With comprehensive expertise across the entire Cleanroom lifecycle from Design and Manufacturing to Supply, Installation, Testing, Commissioning and validation—we are committed to delivering exceptional customer satisfaction at every step.

Manufacturing Capabilities

Facilities: Our three state-of-the-art manufacturing plants span a total area of 80,000 m², equipped with cutting-edge automated machinery located in Hyderabad and Vadodara.

Certifications: iClean's products are certified by FM, Warrington Fire, CE, UL, CBRI, and SEFA. Our manufacturing facilities are ISO certified, holding ISO 9001:2015, ISO 14001:2015, and ISO 45001:2018 certifications.

Achievements

To date, iClean has successfully manufactured and installed over 8 Million square meters of cleanroom partitions worldwide. Our facilities consistently achieve FOYA (Facilities of the Year Awards) certifications, and we have a strong presence in over 22 countries globally.

Product Manufacturing Capacities

Cleanroom Partitions:	720,000 m ² / annum
Cleanroom Equipment:	2,000 Nos / annum
Lab Furniture:	4,000 Nos / annum
Ducting:	4,00,000 m ² / annum



TURNKEY SOLUTIONS

iClean offers Comprehensive engineering services, Including Design, Manufacturing, Commissioning, and Validation, ensuring consistent quality and performance throughout the process.

iClean's consistent project approach ensures customers with high quality & timely delivery.

Our Services on Turnkey Basis

- ▶ Civil Structural & Architectural
- ▶ Cleanroom Interior
- ▶ Cleanroom equipment
- ▶ Lab Furniture
- ▶ HVAC
- ▶ Electrical
- ▶ IBMS
- ▶ Fire Suppression System
- ▶ Utilities
- ▶ LSS



CLEANROOM

iClean offers cleanroom solutions with reliable design, high performance and best efficient system for a wide range of applications, including Pharmaceuticals, Biotechnology, Healthcare, Semiconductor, FMCG, Food and Beverages and more.

DRYROOM

iClean delivers ultra-low humidity rooms called as dry rooms for battery manufacturing with reliable design, high performance and best efficient system.



ICLEAN MANUFACTURING PRODUCTS

At our state-of-the-art manufacturing facilities, iClean produces the following products:



Modular Cleanroom Partitions (Metallic)

iClean cleanroom partitions are double-skinned, self-supporting, load-bearing modular panels, designed to meet the highest standards with the following specifications:

Material of construction:	GP SP Powder coated/ Pre-coated SS 304/SS316
Sheet thickness	: 0.6/0.8/1.0mm
Panel Thickness	: 50/80/100/150mm
Intill Material	: PUF/ROCKWOOL

Cleanroom Partitions (Non-Metallic)

iClean's GRP/HPL panelling system combines advanced manufacturing techniques with specialized GRP formulations and specifications for superior performance and durability.

Thickness of the Panel	:	75/150mm
Material of construction	:	Glass Reinforced Plastic (GRP) High Pressure Laminates (HPL)



Cleanroom Equipment

iClean offers customized solutions and designs cleanroom equipment tailored to meet specific user requirements.

iClean cleanroom equipment consist of:

- ▶ Airshower
- ▶ Pass Boxes (static/dynamic)
- ▶ Laminar Airflow Units
- ▶ Bio-Safety Cabinets
- ▶ Dispensing & Sampling Booths etc.

Lab Furniture

iClean's range of laboratory furniture is meticulously designed to align with the specific needs and usage patterns of end users, ensuring both functionality and durability.

iClean range of Lab Furniture are

- ▶ Fume Hoods
- ▶ Modular Table
- ▶ Island Benches
- ▶ Chemical Cabinets
- ▶ Fume Extraction System
- ▶ Cup Boards



Air Handling Units

iClean offers Air Handling Units (AHUs) which are critical components of Heating, Ventilation, and Air Conditioning (HVAC) systems. They regulate & circulate air throughout a building, ensuring optimal indoor air quality, temperature control, and humidity regulation.

DUCTING

iClean offers Ducting along with other HVAC items. Ducting refers to the system of ducts or conduits used in HVAC (Heating, Ventilation, and Air Conditioning) systems to transport air throughout a building. Ductwork is essential for delivering conditioned air from the Air Handling Unit (AHU) to various spaces and for returning air back to the system for Reconditioning or Exhausting. Effective ducting helps maintain Indoor Air Quality, Regulate Temperature, and control humidity levels in residential, commercial and industrial buildings





TTE Overseas Network

- ▶ Japan
- ▶ China
- ▶ Singapore
- ▶ Vietnam
- ▶ Mexico
- ▶ Malaysia
- ▶ Hong Kong
- ▶ Myanmar
- ▶ India

Inquiries

For inquiries or to explore partnership opportunities, please contact our corporate office or visit our website. We are committed to excellence and look forward to helping you create clean, efficient environments.

Website: www.icleantech.com | info@icleantech.com